



MEMO

To: All Contractors, Racecourse Personnel and Visitors
From: Terry Doolan
Date: 13th February, 2018
Subject: Changed Access and Car Parking at Racecourse Mill from 19th February 2018

Access through Gate 2 and parking in front of the Administration Building at Racecourse Mill will not be available from 19th February, 2018.

We have been advised that there will be work carried out by contractors digging trenches in the car park area in front of the Administration Building starting 19th February 2018.

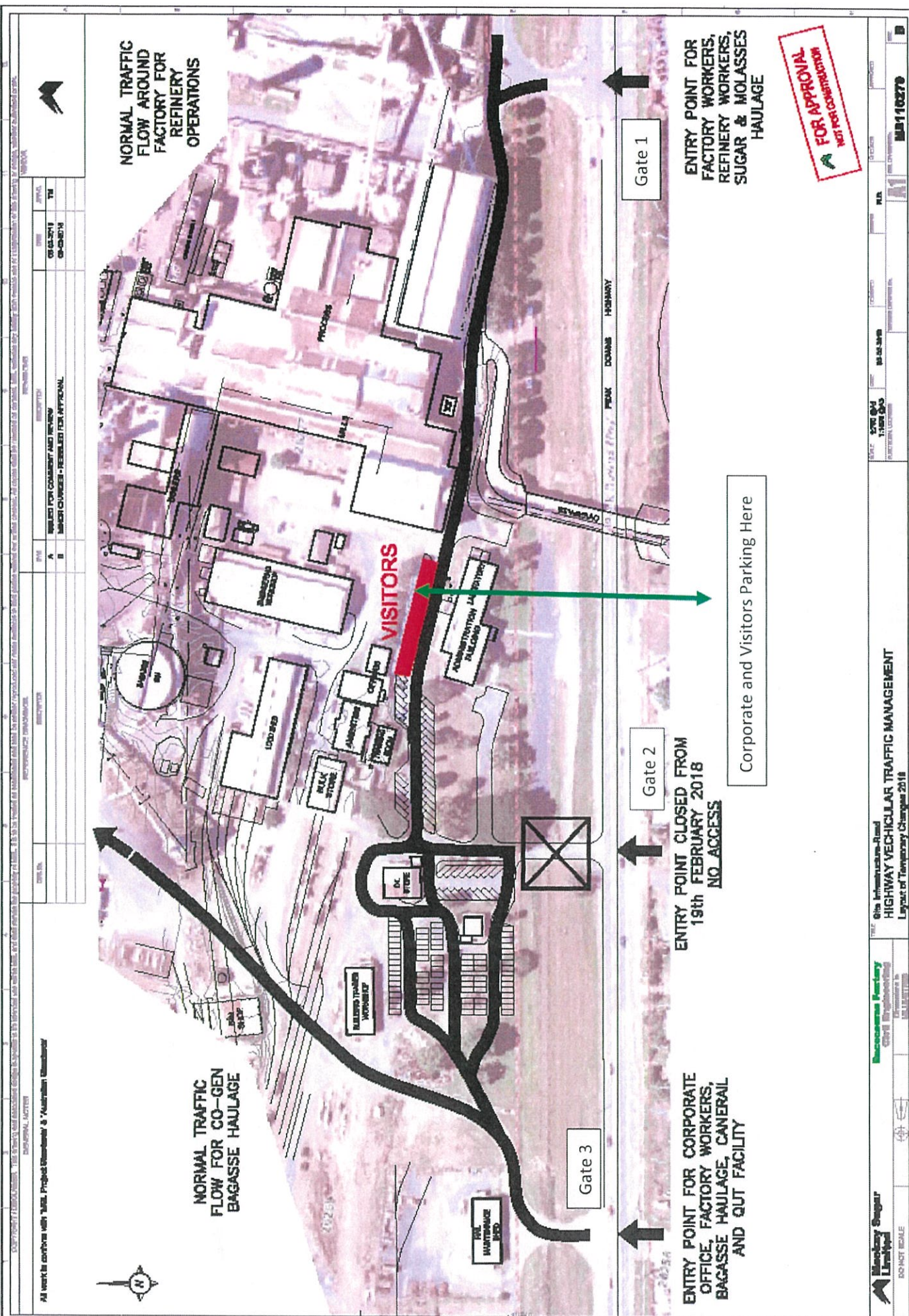
- This car park will be closed indefinitely at this stage.
- Access to the Racecourse site will be available via Gate 1 (Horse and Jockey Road) and Gate 3 (located opposite the Puma Service Station). Please refer to attached maps.

Please be aware of changed parking zones – The grassed area between the Administration Building (Northern Side) and the Central Workshop (Southern Side) is for Shift Personnel parking and parking bays on the northern side of the Administration Building are for Corporate and Visitors. Please adhere to designated signs.



I apologise for any inconvenience that this matter may cause.

Terry Doolan
Factory Manager
Racecourse Mill



NORMAL TRAFFIC FLOW AROUND FACTORY FOR REFINERY OPERATIONS

NORMAL TRAFFIC FLOW FOR CO-GEN BAGASSE HAULAGE

VISITORS

Gate 1

ENTRY POINT FOR FACTORY WORKERS, REFINERY WORKERS, SUGAR & MOLASSES HAULAGE

FOR APPROVAL - NOT FOR CONSTRUCTION

Gate 2

ENTRY POINT CLOSED FROM 19th FEBRUARY 2018 NO ACCESS

Corporate and Visitors Parking Here

Gate 3

ENTRY POINT FOR CORPORATE OFFICE, FACTORY WORKERS, BAGASSE HAULAGE, CANERAIL AND QUT FACILITY



REVISION	DATE	BY	DESCRIPTION
A	08/03/2018	TH	ISSUED FOR COMMENT AND REVIEW
B	08/03/2018	TH	MARKET CHANGES - REBUILT FOR APPROVAL